



📍 48 Vicarage Street, Warminster, Wiltshire, BA12 8JF

🔗 Offers In Excess Of £525,000

An attractive, double fronted, five bedroom, two reception room, two bathroom, detached period house with private rear garden, double garage and ample driveway parking, which has been extensively renovated and is being sold with the benefit of NO ONWARD CHAIN

- Attractive, Detached, Period House
- Renovated & Greatly Improved
- Five Bedrooms, Two Reception Rooms
- Shower Room, En Suite Bathroom & Cloakroom
- Superb Kitchen & Large Utility Room
- UPVC Double Glazing & Gas Central Heating
- Private, Landscaped Garden
- Double Garage & Ample Driveway Parking
- Close To The Town Centre & Schools

🏠 Freehold

🏠 EPC Rating D



An attractive, double fronted, detached, period house with private rear garden, double garage and ample driveway parking, which has been extensively renovated and enjoys a convenient location within easy walking distance of the town centre and numerous amenities. NO ONWARD CHAIN

The property offers beautifully presented, flexible accommodation over three floors comprising; entrance hall with oak flooring, good sized sitting room with working, feature fireplace, impressive, dual aspect dining room with oak flooring and box bay window which is a perfect size for housing a desk, superb, modern kitchen with newly fitted units, wood block worktops, Belfast sink, integrated dishwasher, range cooker and extractor hood over, large utility room with an extensive range of base units and cloakroom off, principle bedroom with contemporary en suite bathroom, two further generous double bedrooms, one single bedroom, well appointed shower room and on the second floor there is a 22' loft bedroom/hobby room. In addition to the main accommodation there is also a useful cellar room which is accessed via stairs leading down from the entrance hall.

Externally; there is a charming, landscaped rear garden with sections of lawn, winding path leading to the side door of the garage, mature trees and bushes. The garden is well enclosed and enjoys a good deal of privacy.

Detached, double garage with up and over door to front, window and door to side. Driveway parking in front for numerous vehicles.

Situation

The market town of Warminster is situated in south Wiltshire close to the Somerset border and Salisbury plain. There are a variety of retail outlets including independent shops and cafes. There is a railway station as well as easy access onto the A303. The town is well located for the larger cities of Bath & Salisbury.

Property Information

Council tax band; E

Tenure; Freehold

Services: Mains drainage, water, electricity and gas

Gas central heating & UPVC double glazing

EPC Rating; D

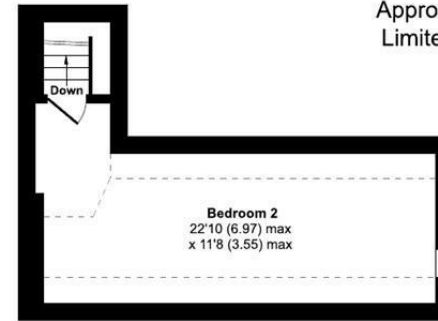


Vicarage Street, Warminster, BA12 8JF

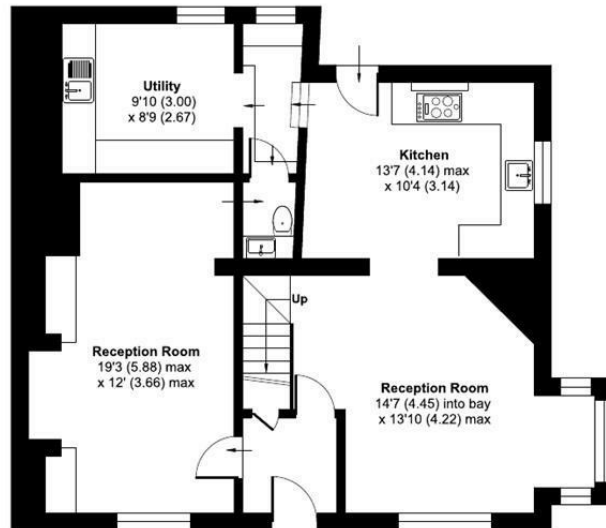
Approximate Area = 1712 sq ft / 159 sq m
 Limited Use Area(s) = 108 sq ft / 10 sq m
 Garage = 375 sq ft / 34.8 sq m
 Total = 2195 sq ft / 203.9 sq m

For identification only - Not to scale

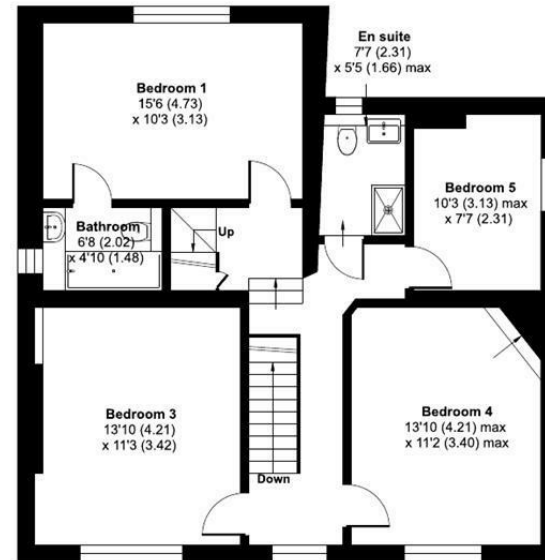
Denotes restricted head height



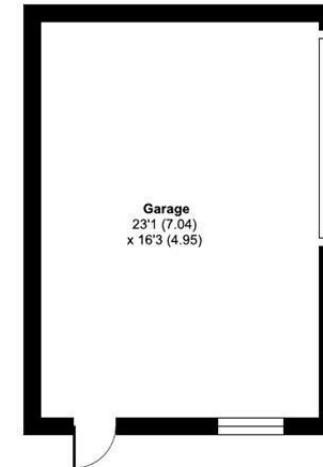
SECOND FLOOR



GROUND FLOOR



FIRST FLOOR



 Floor plan produced in accordance with RICS Property Measurement 2nd Edition, Incorporating International Property Measurement Standards (IPMS2 Residential). © nichecom 2026. Produced for Strakers. REF: 1481536

Disclaimer These particulars, whilst believed to be accurate are set out as a general outline only for guidance and do not constitute any part of an offer or contract. Intending purchasers should not rely on them as statements of representation of fact, but must satisfy themselves by inspection or otherwise as to their accuracy. No person in this firm's employment has the authority to make or give any representation or warranty in respect of the property. All measurements and distances are approximate only. Your home is at risk if you do not keep up repayments on a mortgage or other loan secured on it.